

**FIG. 1**

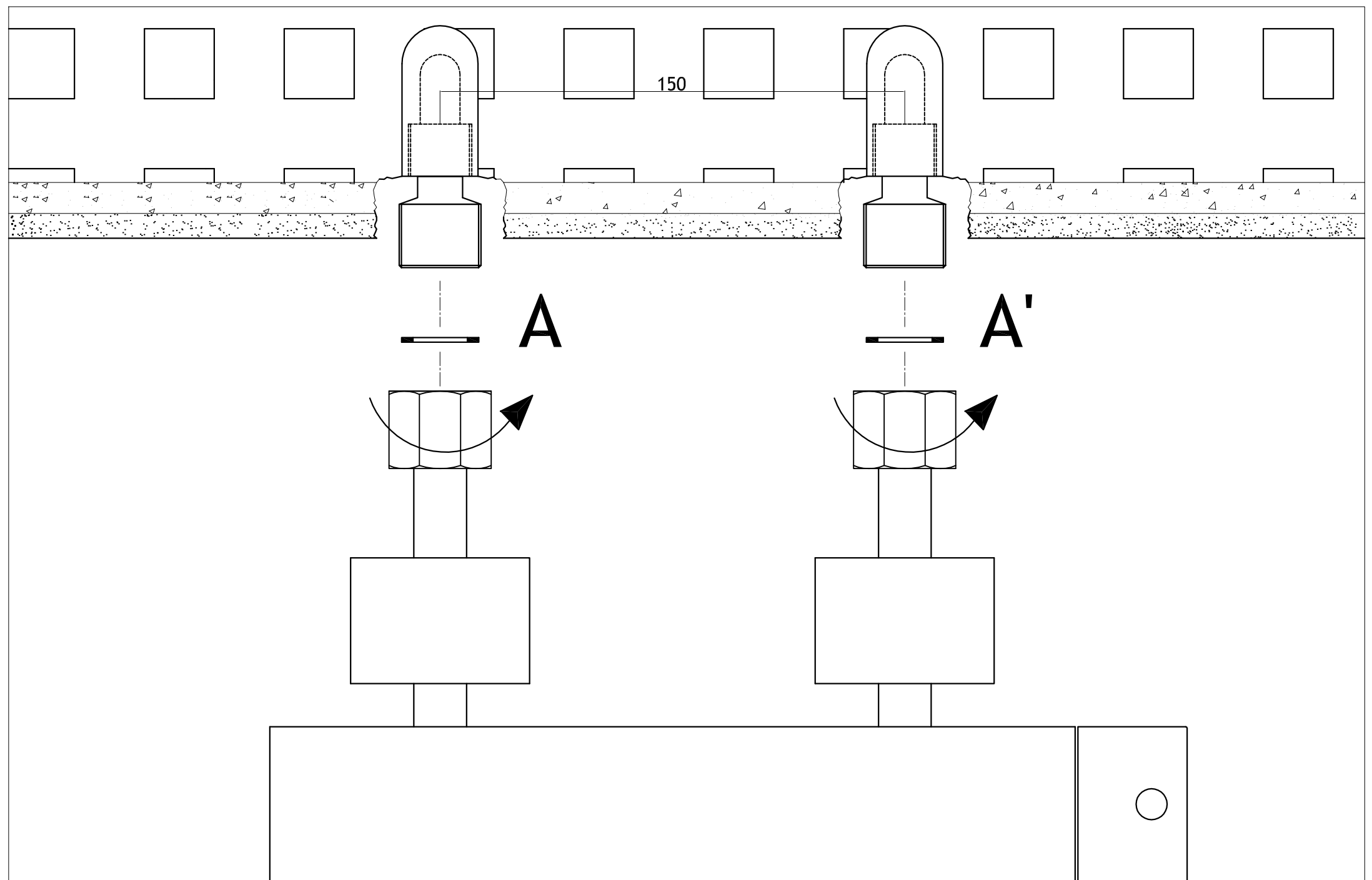
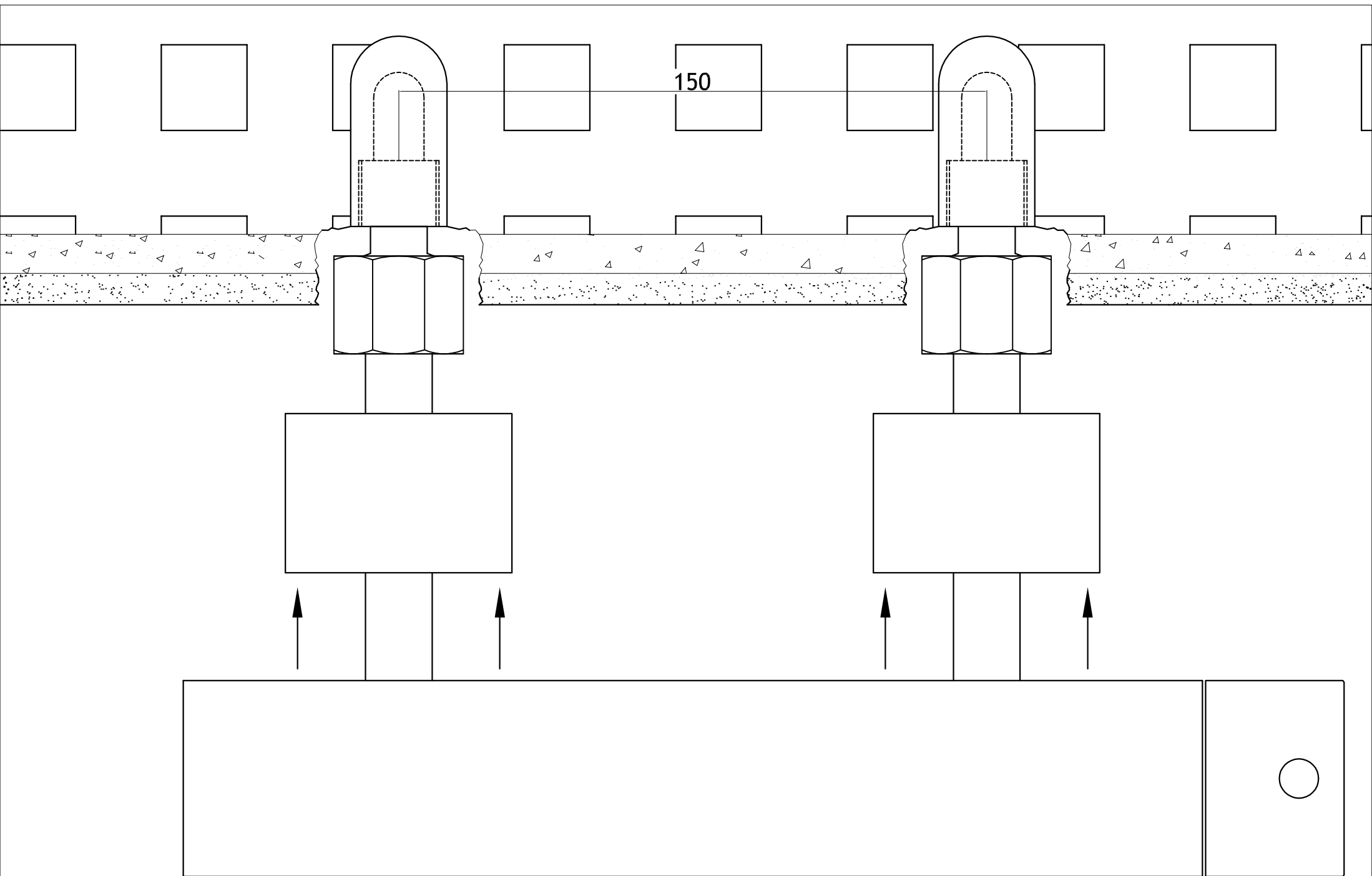
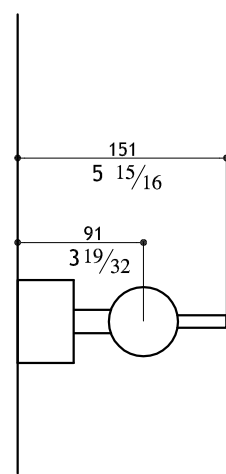
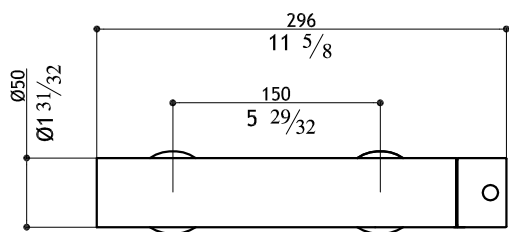


FIG. 2



150

FIG. 3



## **ASSEMBLY INSTRUCTIONS SHOWER MIXER u.s.w. 95.244.60.0**

### **FITTING MIXER TO THE WALL**

(FIG 1)

- Check that the horizontal position of the mains ranges between 136 and 162 mm and secure the 2 enclosed eccentrics to the mains for obtaining 150 mm wheel base.

(FIG 2)

- Tighten the two nuts ESA 30 to the eccentrics after positioning gaskets (A-A').
- Check water tightness and correct horizontal position of the mixer.
- Adjust eccentrics when needed.

(FIG 3)

- Push trim rings to the wall taking care of not scratching the mixer arms.